



# SMART II

PEM/DM Hybrid Fuel Cell Test System



WonATech is about to take the giant step of introducing the **SMART II** PEM/DM Hybrid Fuel Cell Test System. With the exceptional feature of the **SMART II**, you can digitize your fuel cell economically and evaluate it easily.

**SMART II** Fully Integrated and Automated System For PEM & DM application

**SMART II** Membrane Type Humidifiers for Fuel & Oxidant gas

**SMART II** Built-in Precision Electronic Load

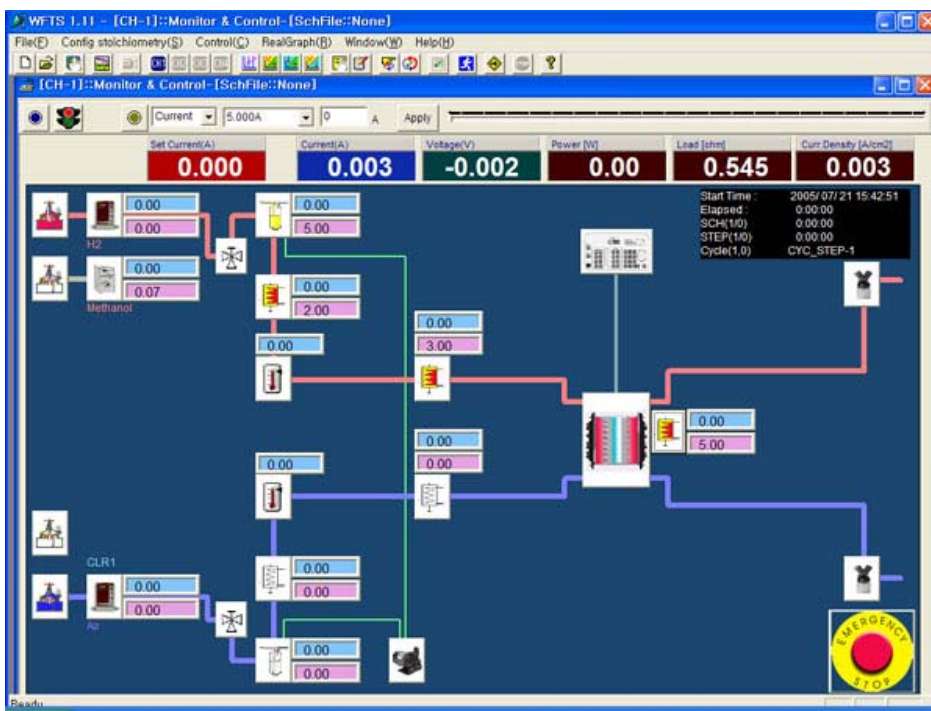
- Up to 50Volts & 50 Amperes
- Operation Max. 50Amps at 0.2V
- CC/CV/CR/CP Mode Operation

**SMART II** Compact Size: 400mm(W) x 500mm(H) x 500mm(D)

**SMART II** Precision Methanol pump-rotary piston pump(long-term stability) for DM application

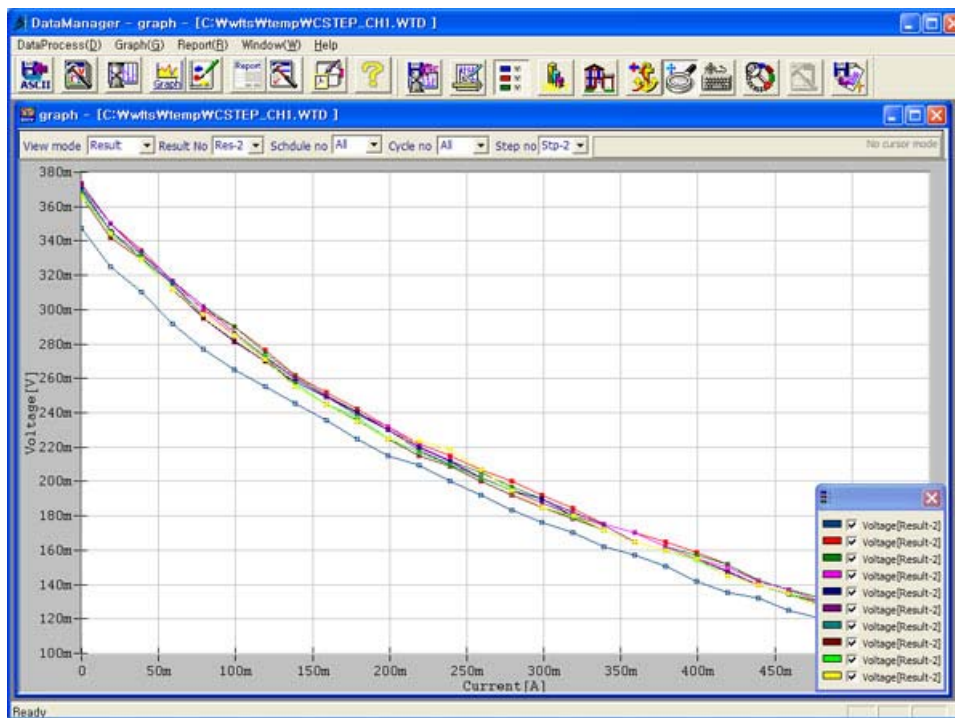
**SMART II** Procedure file operation , batch file operation & manual operation

**SMART II** Powerful GUI(Graphic User Interface) control software





Independent Fuel cell data management software



Enhanced Safety & Protection Functions;

- Automatic hardware shutdown for event of each temperature, pressure, current, voltage exceeding setting value
- Emergency Stop switch in hardware & software
- Automatic N2 gas feeding to cell

System Configuration

- Electronic Load (100Watt: 50V/10V/2V,50Amp/10Amp/1Amp)
- Controller
- Anode MFC: 1,000sccm
- Cathode MFC: 5,000sccm
- Rotary Piston Pump: 0.1-45ml/min
- Humidifier (anode & cathode): membrane type
- Water Auto feeding for humidifier
- Pressure sensors for anode & cathode
- PC control type 3 way valves (anode & cathode)
- Back pressure regulators (manual type)

- Emergency Shutdown Switch
- External temperature control and measurement 3ea (Anode line, Cathode line, Cell)
- WFCTS software set ( server software, control software, data management software)