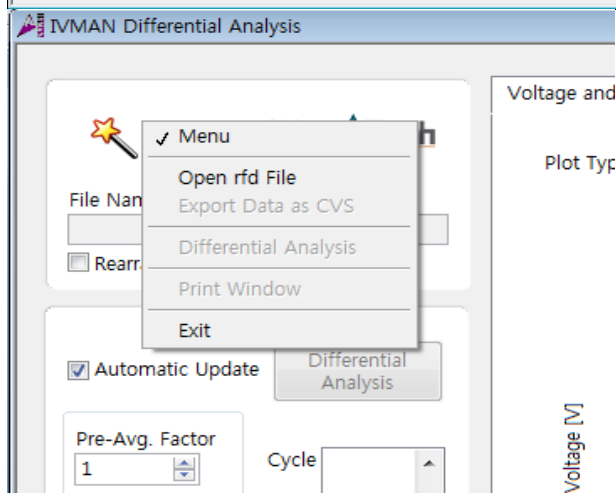
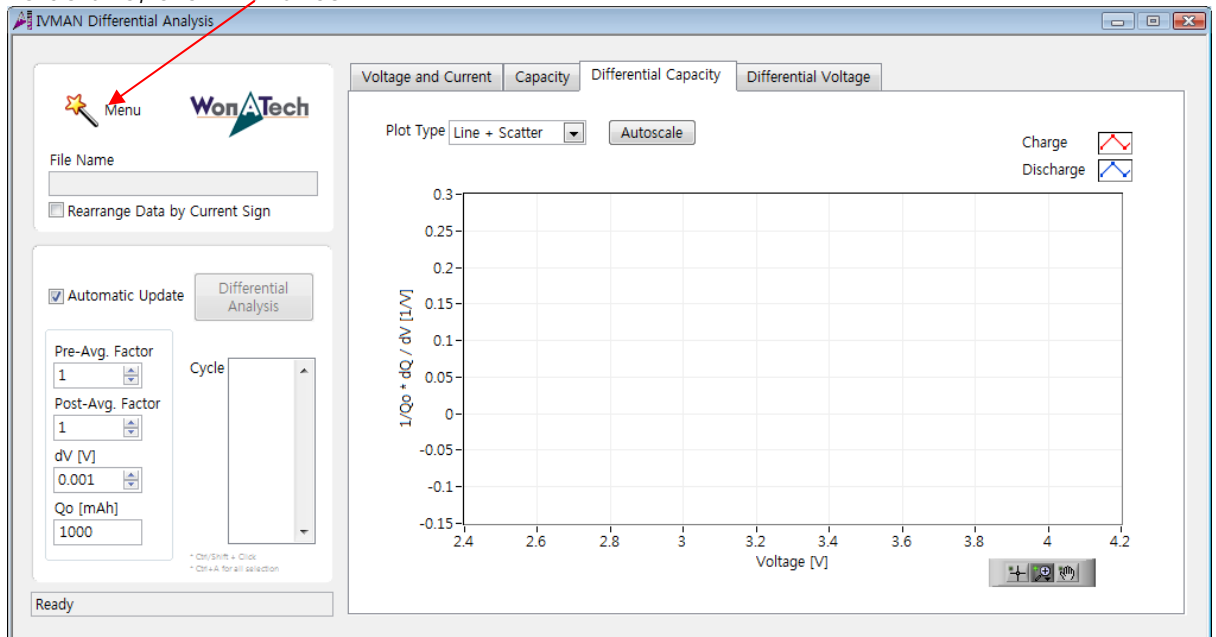
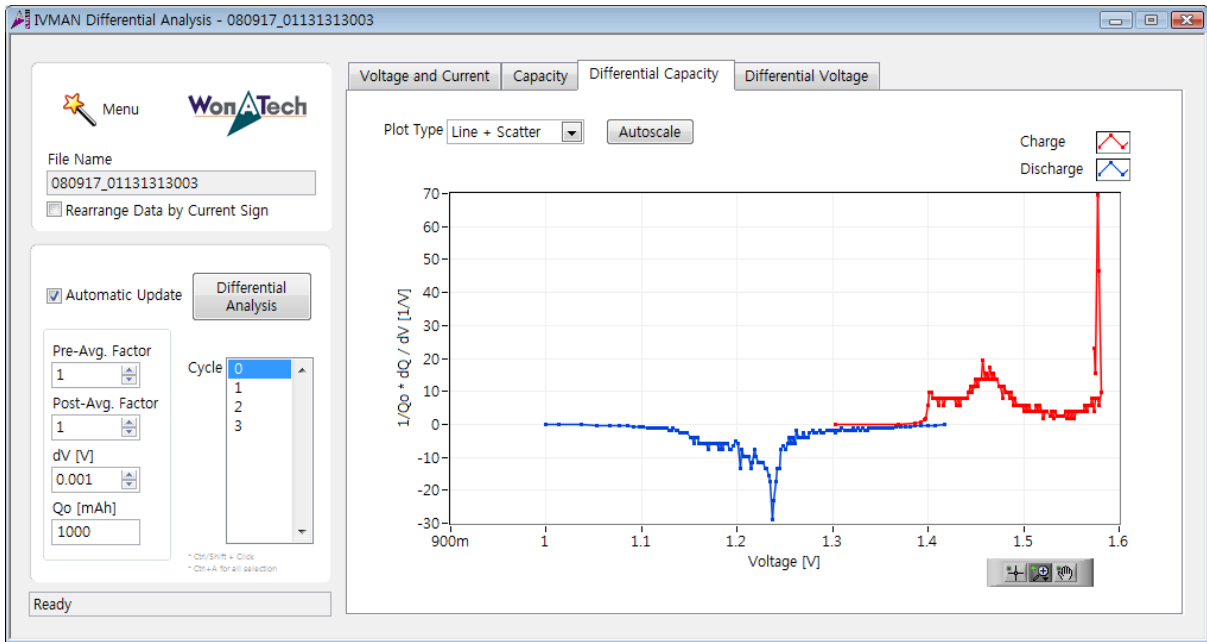


How to use EVS data analysis software- Quick Guide

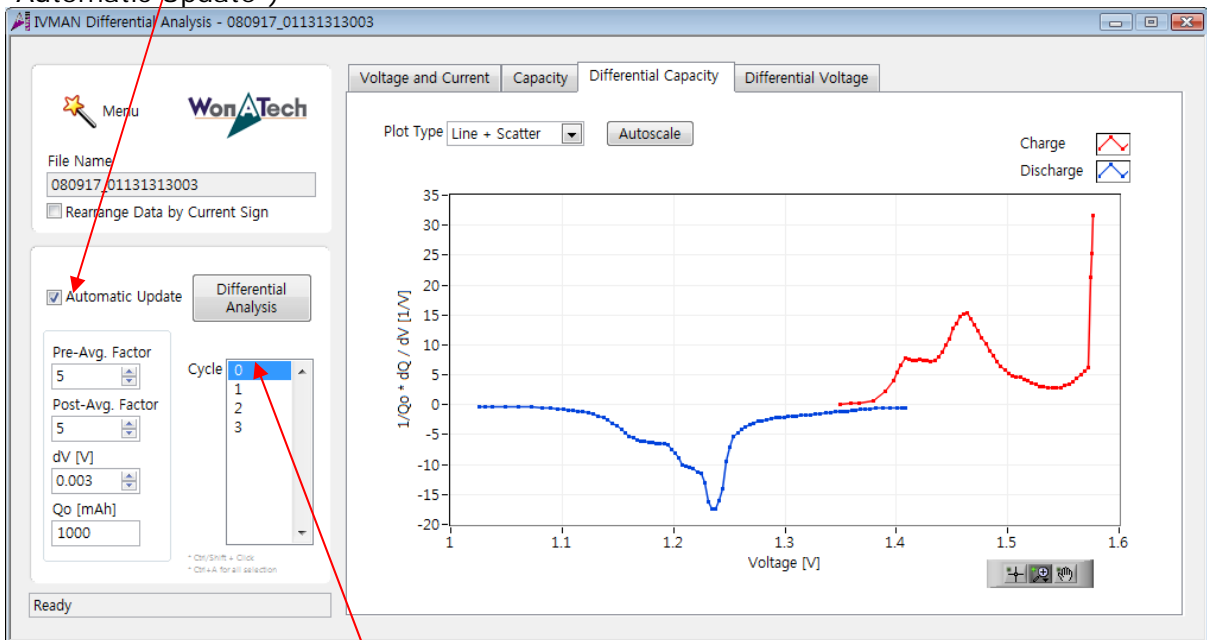
1. Download EVS software on <http://www.xenosystem.com/t6.php?id=downloaddevs>
2. Extract evs.zip on temporary folder and run setup.exe
3. After installation, Run "C:\Program Files\WonATech\IVMAN1.1\IVMAN DA.exe"
Open your rfd file(This file came from your battery charging/discharging experiment using WonATech's WBCS, WMPG, WPG instruments)
To do this, click Menu icon.





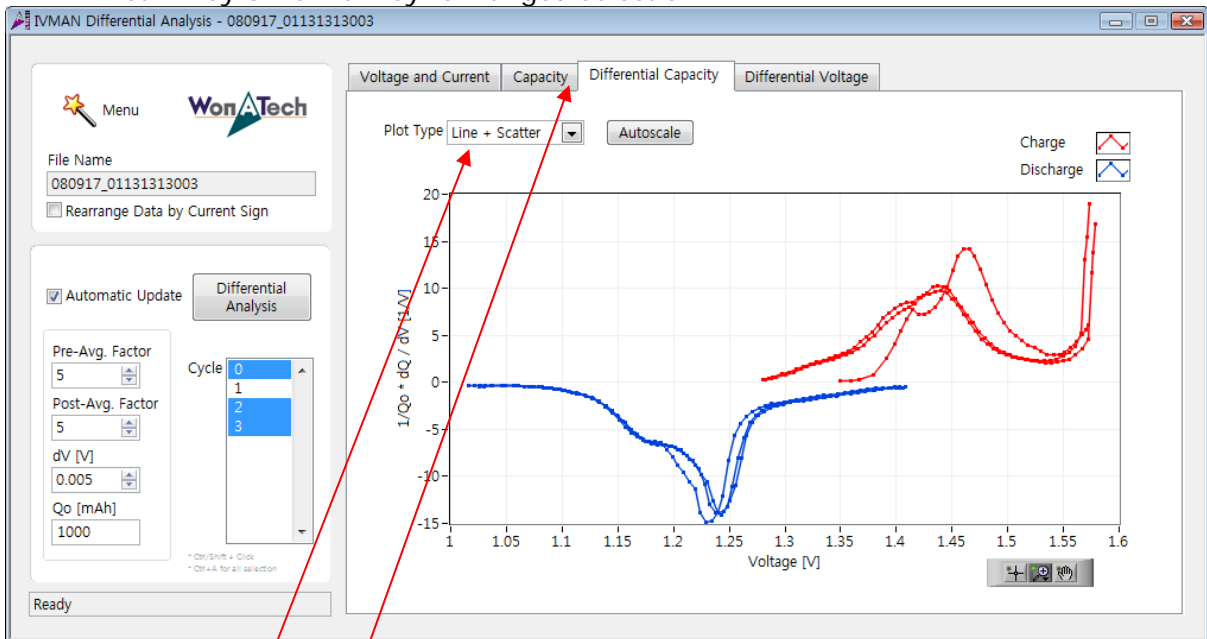
- You may select averaging function by selecting Pre-Avg.factor and Post-Avg.Factor.(select data point number for averaging)
 - Pre-Avg.factor: Averaging points in raw data
 - Post-Avg.Factor: Averaging points in calculated data
- You can determine dV value.

(The graph will be changed by selecting averaging and/or dV automatically if you select "Automatic Update")



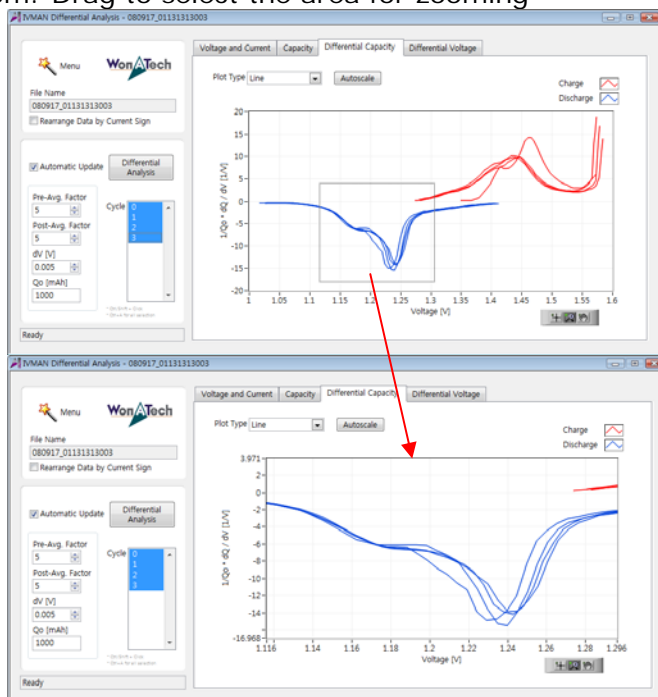
- You can select cycle number to display graph.

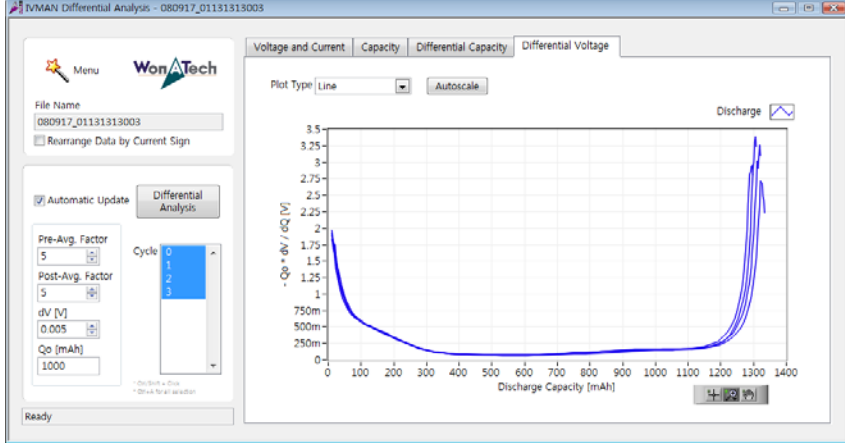
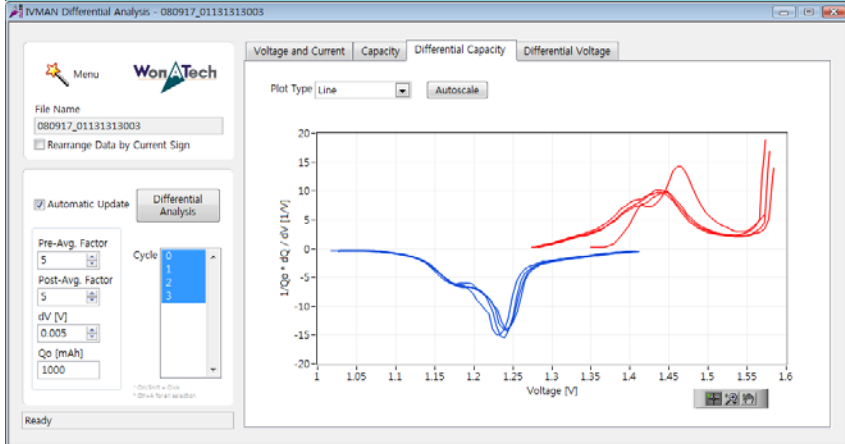
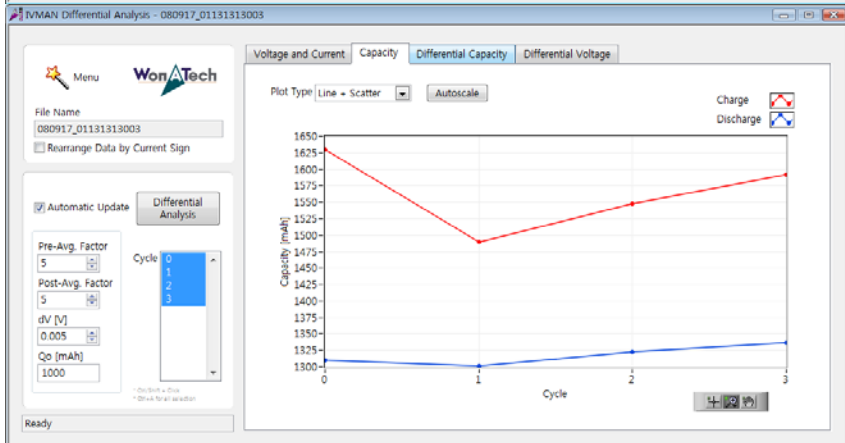
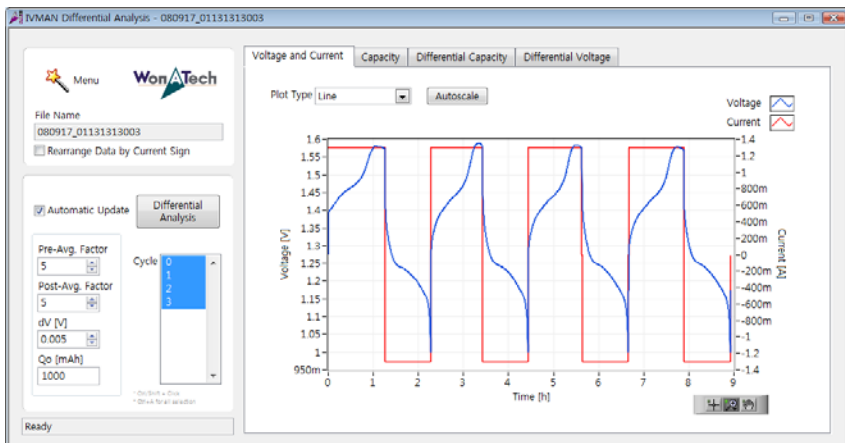
- If you want overlay multiple cycles data, click the cycle number with pressing "ctrl" key or "shift" key for ranged selection



[Plot Functions]

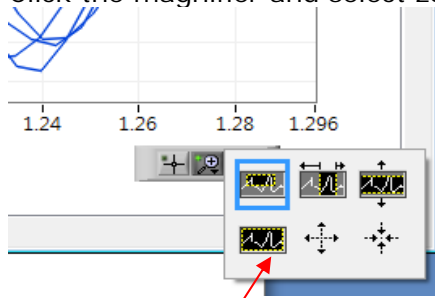
1. Plots: You can select graph view; "Voltage and current vs. time", "Capacity vs. cycle number(Capacity)", " dQ/dV vs. voltage (Differential capacity)", " dV/dQ vs. discharging capacity(Differential voltage)
2. Plot line type: Line, Scatter(dot), Line+Scatter
3. Zoom: Drag to select the area for zooming



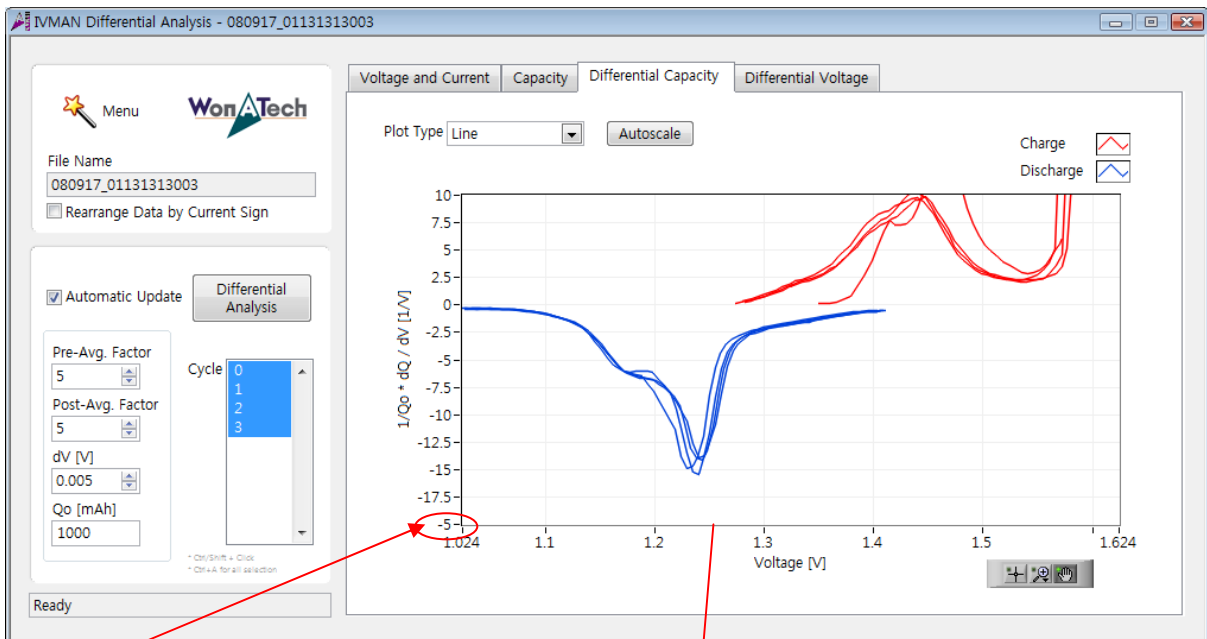


[Advanced Plot Functions]

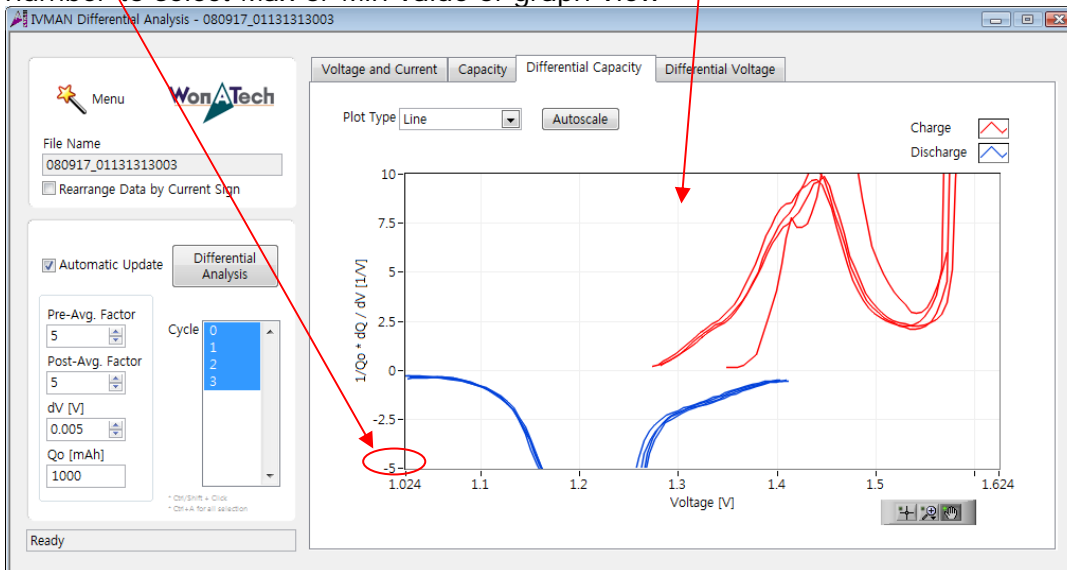
1. Zoom option
Click the magnifier and select zoom type.



Initializing the size

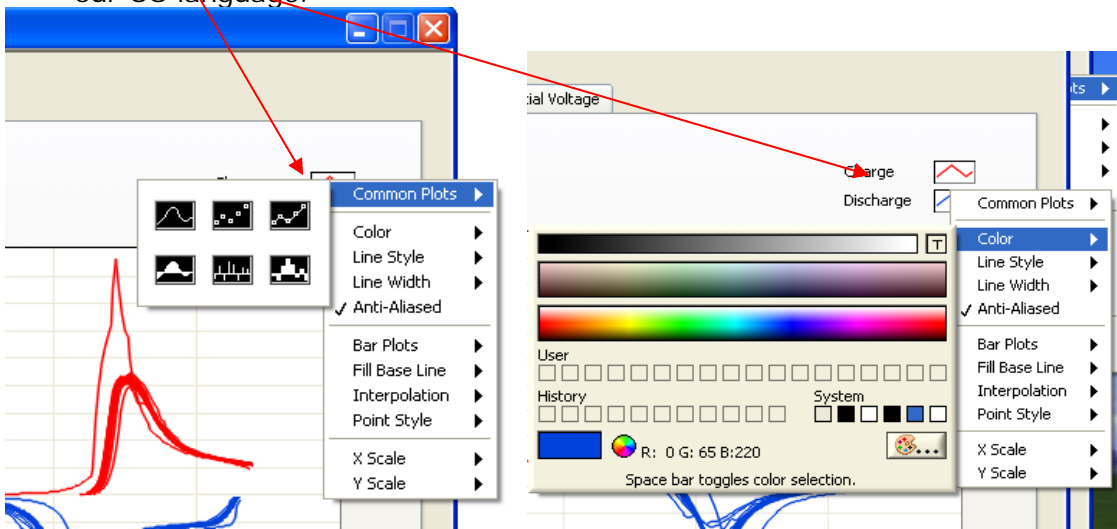


By clicking the maximum number or Minimum number of each axis, you can input the number to select Max or Min value of graph view

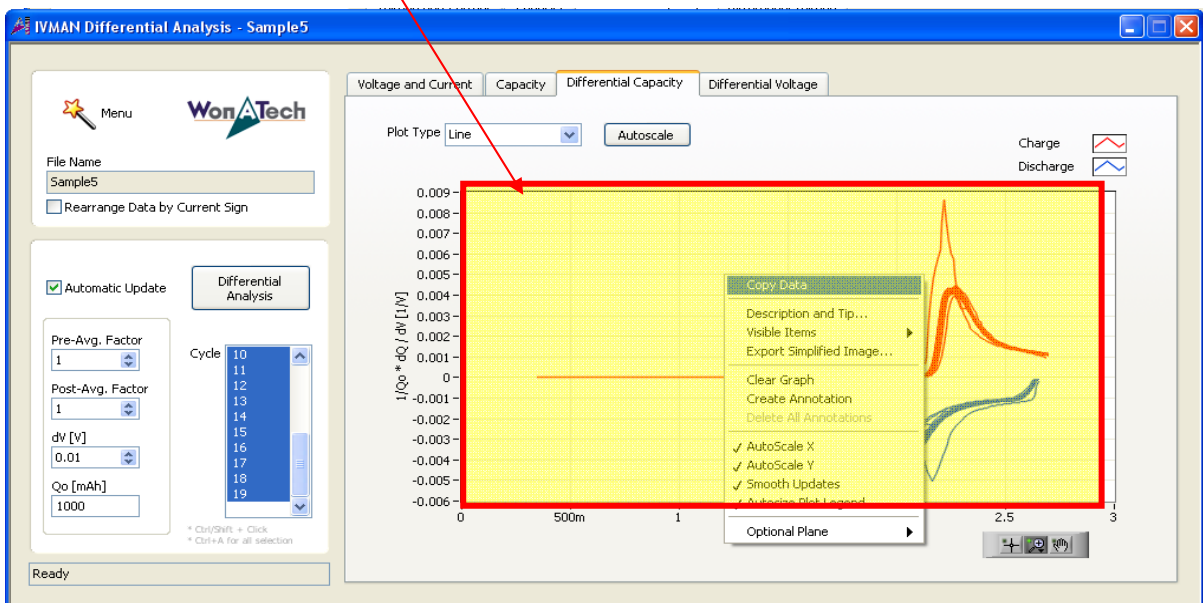


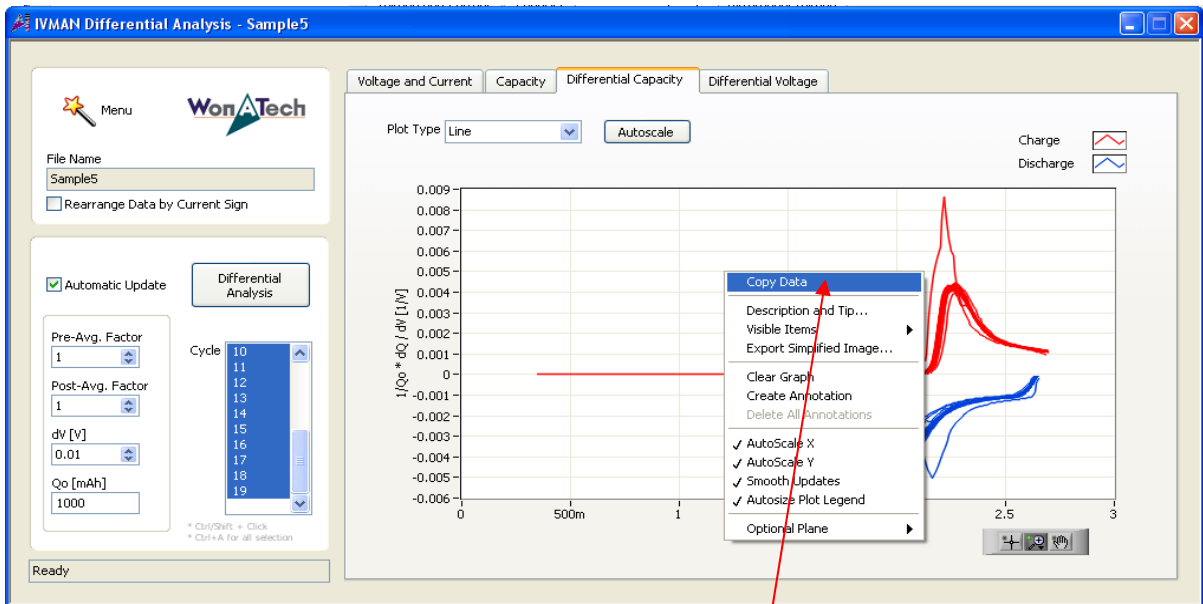
2. Graph option

Click legend then submenu will appear. The menu language will display following our OS language.

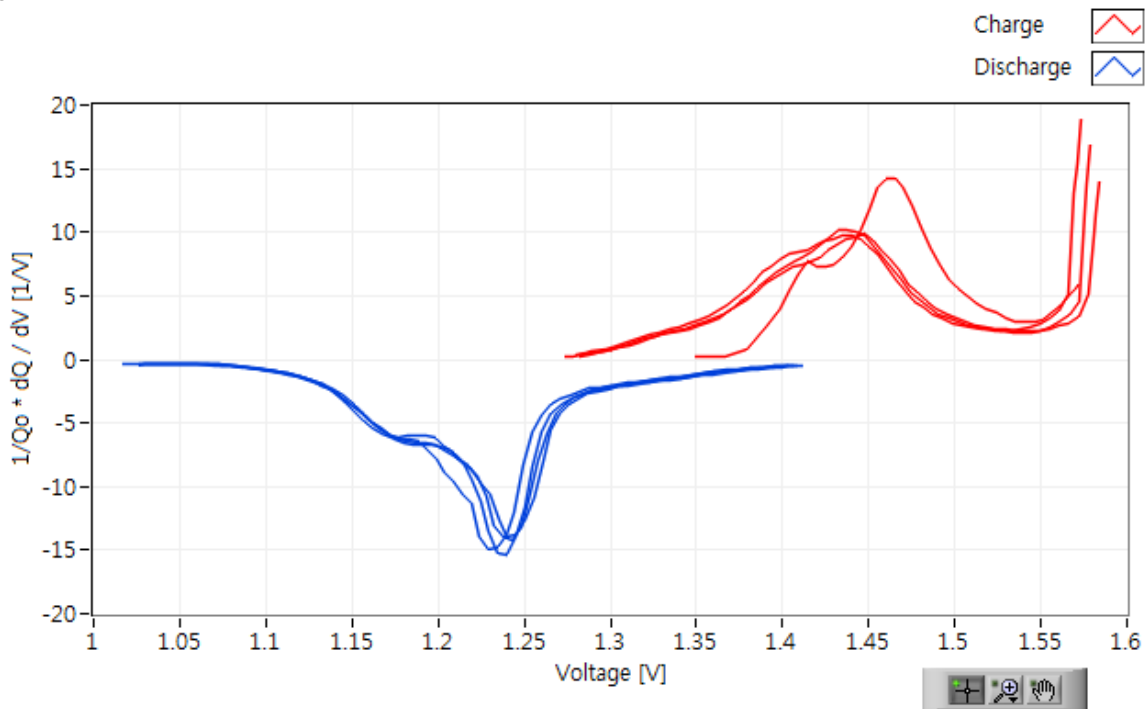


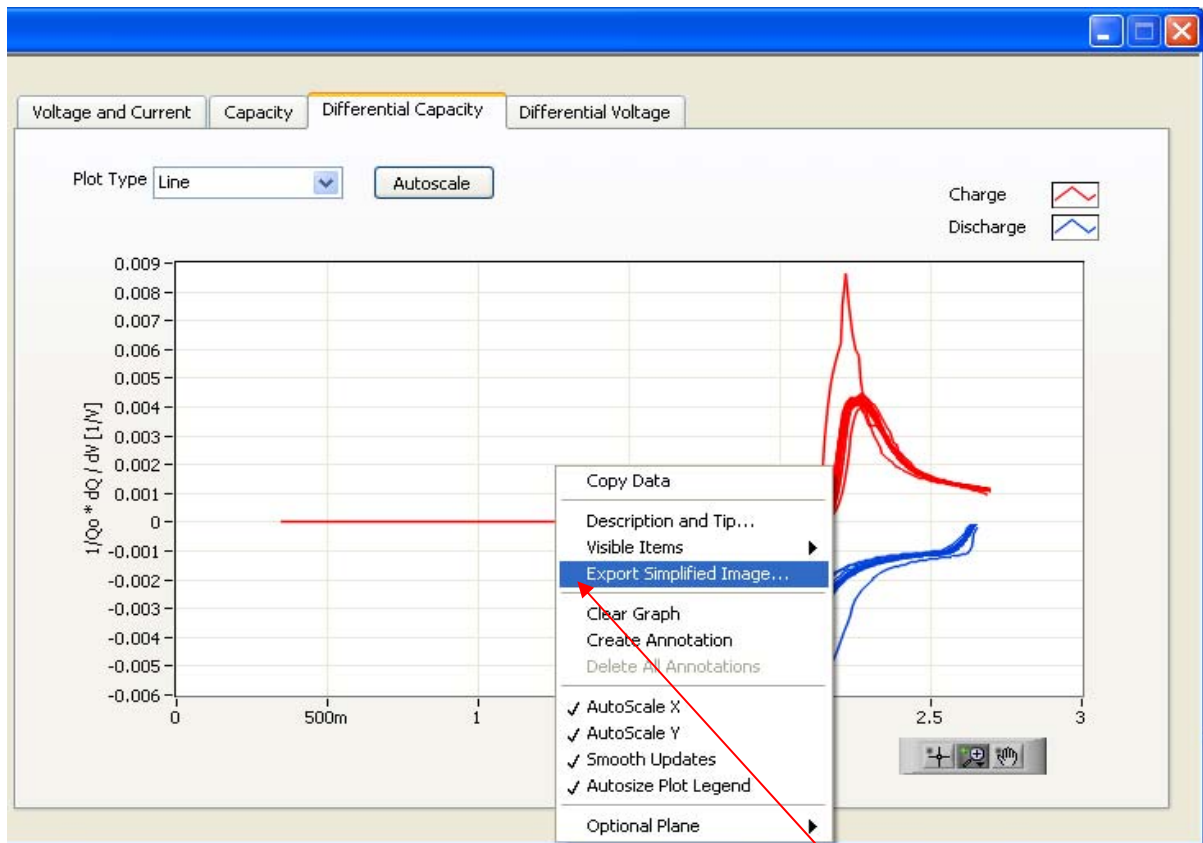
3. Move cursor to **graph region** and click **right button** of mouse. The submenu will appear.



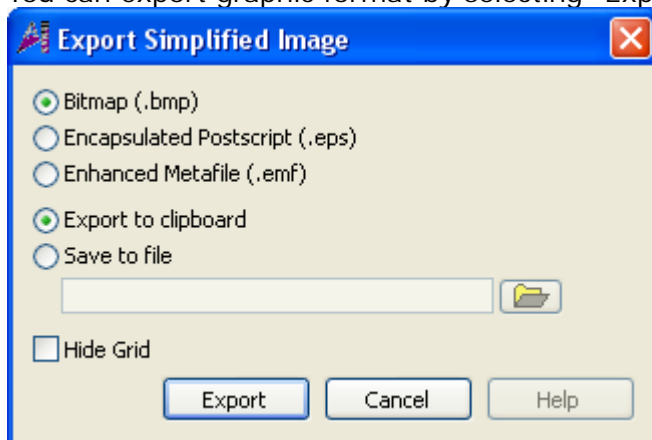


You can copy the graph into clipboard by selecting "Copy data"
 (Language will be displayed following your operating system's language)
 You can paste this graph by "ctrl"+v on your application software such as Excel, Word
 etc.

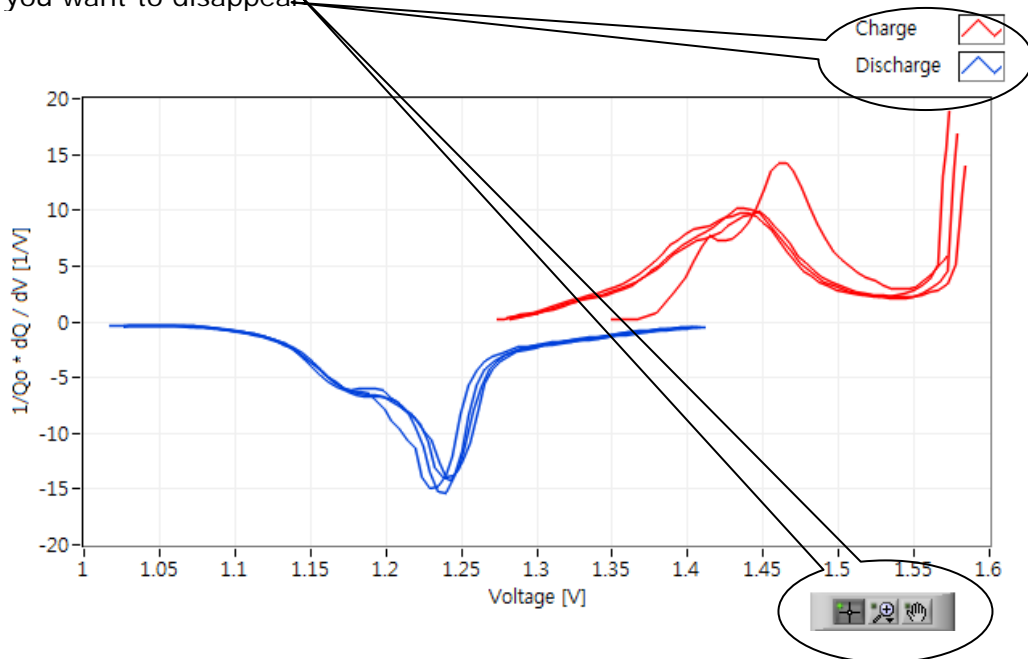




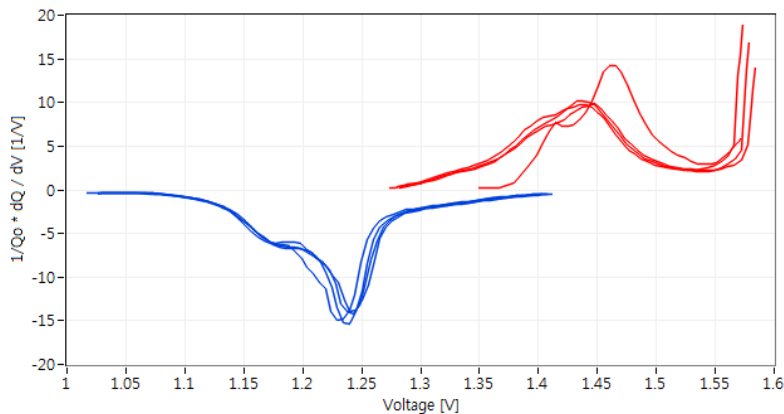
You can export graphic format by selecting "Export Simplified Image"



If you want to disappear

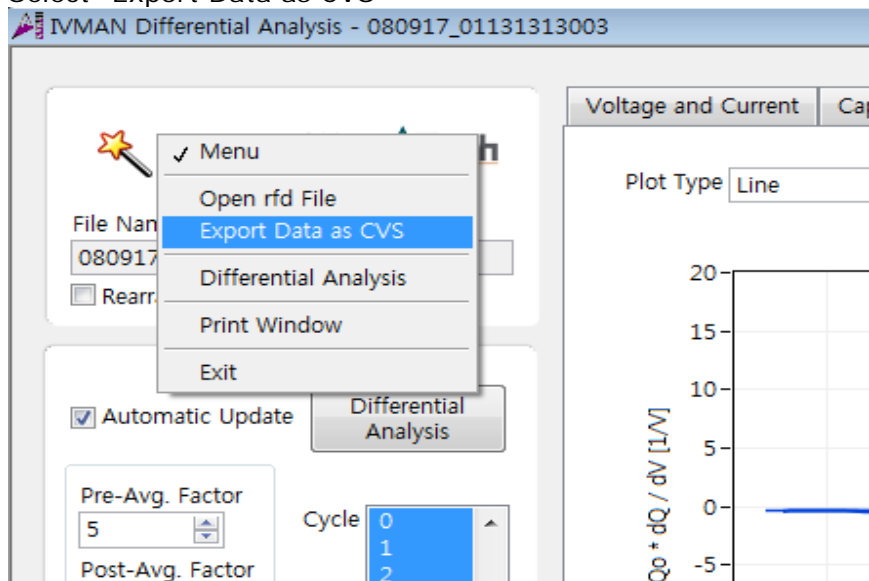


Select "Visible items" and check out the selection(s)

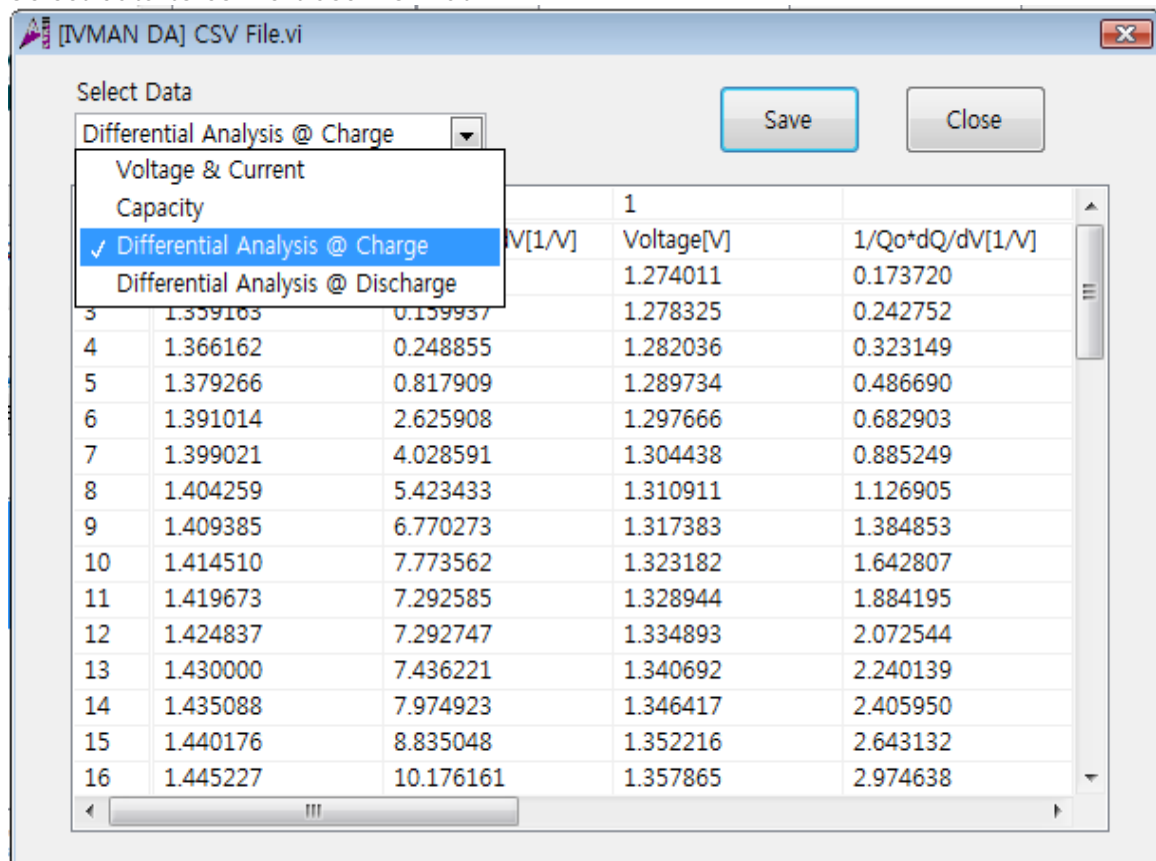


[Ascii file conversion]

1. Click Menu
2. Select "Export Data as CVS"



3. Select data to convert ascii format



4. Click "save" button.